



Our Precision, Your Advantage



SCAN FOR KYB'S SUPPORT TOOLS

KYB Technical Tip: DISPOSAL OF SHOCK ABSORBERS



Before starting, you must determine what type of shock absorber you're disposing of: monotube or twintube?

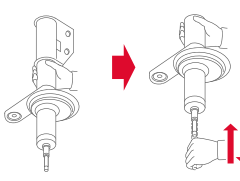
Twintube Oil **A** ← NO

Twintube Gas **A** ← NO

Monotube Gas **B** ← YES



Compress the piston rod fully, then release it. Does it extend back fully?

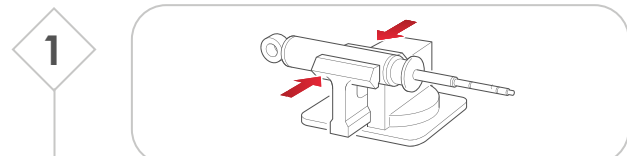


Turn the shock absorber upside down, compress five times, then release. Does it extend fully?

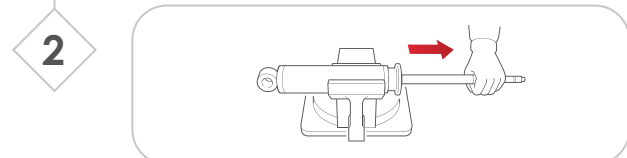
To dispose of shock absorbers in a safe and eco-friendly way, perform the following steps. For safety reasons, always wear safety glasses and protective gloves.



A Disposal of Oil or Twintube Gas Shock Absorbers

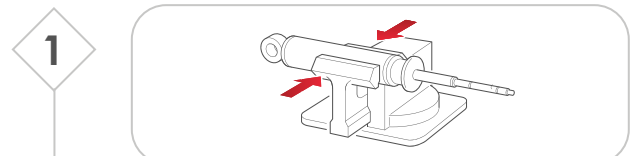


1 Place the unit in a horizontal position in a vice. Tighten to make sure that the unit cannot move.

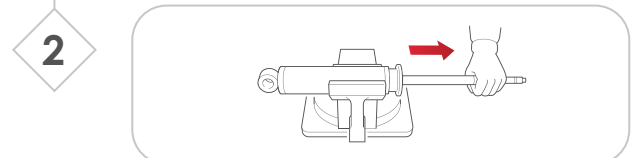


2 Ensure the piston rod is fully extended.

B Disposal of Monotube Shock Absorbers



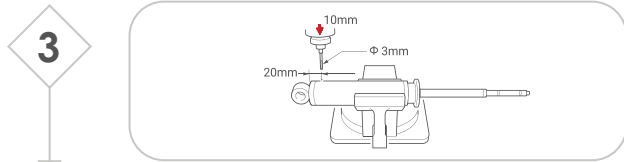
1 Place the unit in a horizontal position in a vice. Tighten to make sure that the unit cannot move.



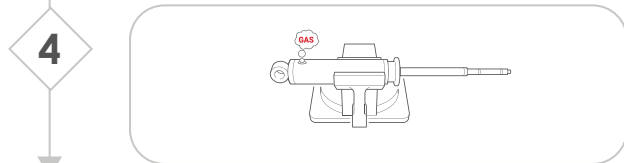
2 Ensure the piston rod is fully extended.



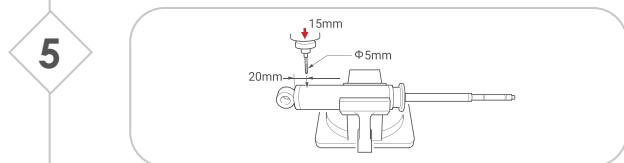
A Disposal of Oil or Twintube Gas Shock Absorbers



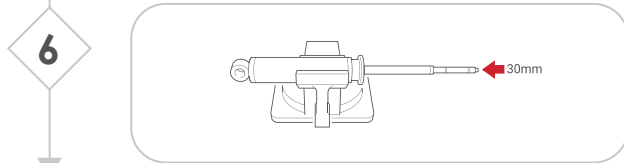
Drill a 3mm hole in the outer tube, 20mm from the lower end of the body, 10mm deep.



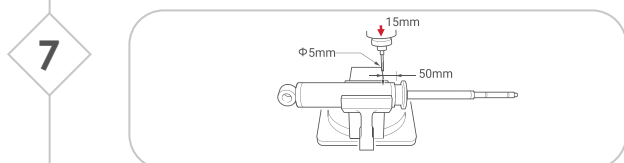
Allow the gas to leak from the shock absorber.



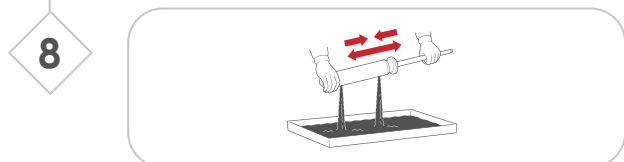
Drill a 5mm hole, 20mm from the bottom of the unit, 15mm deep.



Compress the piston rod 30mm.

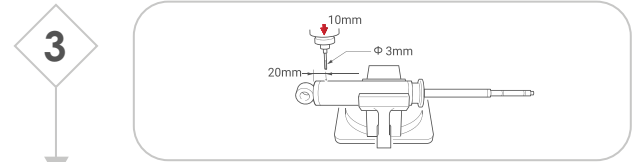


Drill another 5mm hole, 15mm deep around 50mm from the top of the unit.

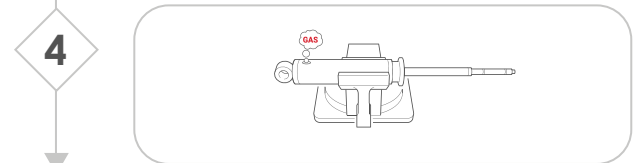


Compress and extend the unit repeatedly to help drain the oil.

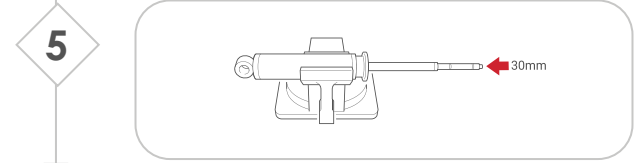
B Disposal of Monotube Shock Absorbers



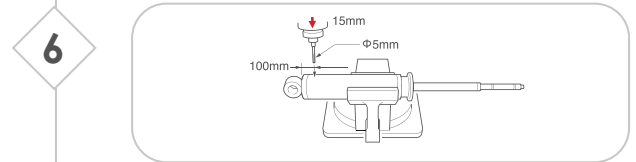
Drill a 3mm hole in the outer tube, 20mm from the lower end of the body, 10mm deep.



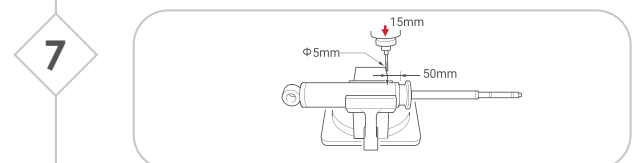
Allow the gas to leak from the shock absorber.



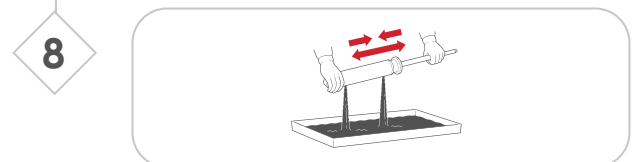
Compress the piston rod 30mm.



Drill a 5mm hole, 100mm from the bottom of the unit, 15mm deep.



Drill another 5mm hole, 15mm deep around 50mm from the top of the unit.



Compress and extend the unit repeatedly to help drain the oil.



Once completed, dispose of the oil in a used-oil collection tank.
Dispose of the empty shock absorber as scrap metal.